

## SERIES 18

# .438" Double Row Phenolic Barrier Terminal Strip

### Description

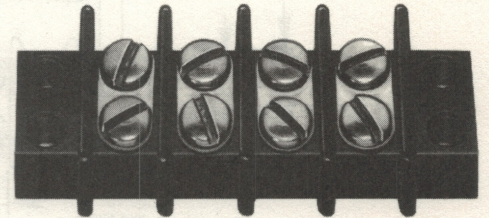
The series 18 phenolic double row terminal strip is one of our most versatile products. The terminal block is offered in feed-thru and open bottom designs and is available in a variety of terminal and screw styles.

The 150° C temperature rating and robust terminal design make the series 18 the choice for your most demanding applications.

Made in the USA, all Beau terminal blocks embody the highest quality standards in the industry-using the finest materials and world class manufacturing processes. They meet or exceed all applicable industry standards.

### Features

- **Snap-On covers** meet UL touch safe requirements. The low-cost optional covers are an economical way to prevent accidental shock.
- **High temperature phenolic** insulator out performs many thermoplastic compounds.
- **Wide variety of options.** Our broad range of screw, terminal, hardware and mounting options allows us to save you assembly costs and improve interconnect performance.



### PRODUCT RATINGS

#### # 6-32 BINDING HEAD SCREW

<b>UL</b>	Class B	15 Amps @ 250 V	14 AWG
	Class C	10 Amps @ 300 V	14 AWG
<b>CSA</b>	Class B	20 Amps @ 300 V	14 AWG
	Class C	20 Amps @ 300 V	14 AWG

#### #6-32 WIRE CLAMP SCREW

<b>UL</b>	Class B	20 Amps @ 250 V	12 AWG
	Class C	10 Amps @ 300 V	12 AWG
<b>CSA</b>	Class B	20 Amps @ 300 V	12 AWG
	Class C	20 Amps @ 300 V	12 AWG

### APPROVALS

<b>UL</b>	File No. E48521
	Guide No. XCFR2
<b>CSA</b>	File No. 025562

### TECHNICAL SPECIFICATIONS

#### ELECTRICAL

DWV	10500 VDC
IR	>5000 Megohms

#### MECHANICAL

Tightening torque	12 in.-lbs.
Destructive torque	13 in.-lbs.
Wire strip length	5/16"
Wire range	12 to 22 AWG

#### ENVIRONMENTAL

Operating temp	-55° to +150° C
----------------	-----------------

### MATERIALS

Insulator	General purpose phenolic, UL94HB, black
Terminal Screws	Brass, nickel plate #6-32, phillips/slotted, steel, zinc chromate plate

### OPTIONS

-45	Slotted screw
-45-56	Stainless steel screw, slotted
-47	Screws up, wire ready
-49	Brass, phillips/slotted screw
-50	Clamp washer, phillips/slotted screw
-58	No screws, barrier only
-59	Screws supplied unassembled
-60	One row screws supplied unassembled
-61	One row screws not supplied
-66	Bonded marker strip
-C	No mounting ends

### HOW TO ORDER

<b>1</b>	<b>8</b>	<b>X</b>	<b>X</b>	<b>X</b>	<b>X</b>
SERIES	TERMINAL STYLE	NO. OF POLES	OPTIONS		
	0 1 2	2 to 30	(Dash #s above and opposite page)		
	3 5 6				
	7				

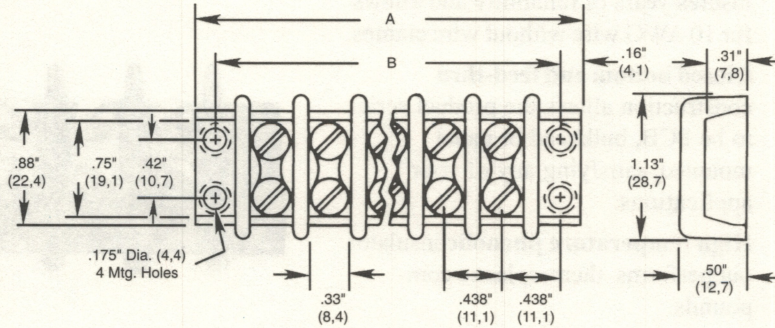
\*Consult factory for combinations of screw options.

**BEAU**  
INTERCONNECT

Division of Vernitron Corporation  
Laconia, NH 03247-0010  
Phone (603) 524-5102  
Fax (603) 524-1627



# SERIES 18



No. of Circuits	A		B	
	in.	mm	in.	mm
2	1.63	41.4	1.31	33.4
3	2.06	52.3	1.75	44.5
4	2.50	63.5	2.19	55.6
5	2.94	74.7	2.63	66.7
<hr/>				
6	3.38	85.9	3.06	77.8
7	3.81	96.8	3.50	88.9
8	4.25	108	3.94	100
9	4.69	119	4.38	111
<hr/>				
10	5.13	130	4.81	122
11	5.56	141	5.25	133
12	6.00	152	5.69	144
13	6.44	164	6.13	156
<hr/>				
14	6.88	175	6.56	167
15	7.31	186	7.00	178
16	7.75	197	7.44	189
17	8.19	208	7.88	200
<hr/>				
18	8.63	219	8.31	211
19	9.06	230	8.75	222
20	9.50	241	9.19	233
21	9.94	252	9.63	244
<hr/>				
22	10.38	264	10.06	256
23	10.81	275	10.50	267
24	11.25	286	10.94	278
25	11.69	297	11.38	289
<hr/>				
26	12.13	308	11.81	300
27	12.56	319	12.25	311
28	13.00	330	12.69	322
29	13.44	341	13.13	333
<hr/>				
30	13.88	353	13.56	345

## TERMINAL STYLES

**STYLE 0**  
Screw Terminal

**Style 1**  
One Sided Solder

.42" (1.14), .31" (7.9), 1.14" (20.6), .152" Dia. (3.9)

**Style 2**  
Two Sided Solder

.42" (10.7), .31" (7.9), 1.59" (40.4), .152" Dia. (3.9)

**STYLE 3**  
Short Solder

.152" Dia. (3.86), .12" (3.0), .88" (22.4), .51" (13.0) (Exposed tail)

**STYLE 5**  
Long Solder

.152" Dia. (3.86), .12" (3.0), .100" (25.4), .63" (16.0) (Exposed tail)

**STYLE 6**  
Long PC

.152" Dia. (3.86), .75" (19.1), .39" (9.9) (Exposed tail), .06" (1.5)

**STYLE 7**  
Wire Wrap

.152" Dia. (3.86), 1.20" (30.5), .83" (21.1) (Exposed tail), .06" (1.5)