

EMC Components

EMC Filters for AC Power Supply Adapter

ANF, ANF-U Series

FEATURES

- These plug-in type EMC filters provide highly effective attenuation of high-voltage pulses power lines.
- Noise in the MF and HF bands are suppressed with outstanding efficiency.
- Leakage current is maintained at less than 0.5mA.
- An overcurrent protection function is built-in to provide added safety.
- This product plugs directly into AC outlets and is thus exceptionally easy to use. It is also highly effective as an EMC filter.

SAFETY STANDARDS

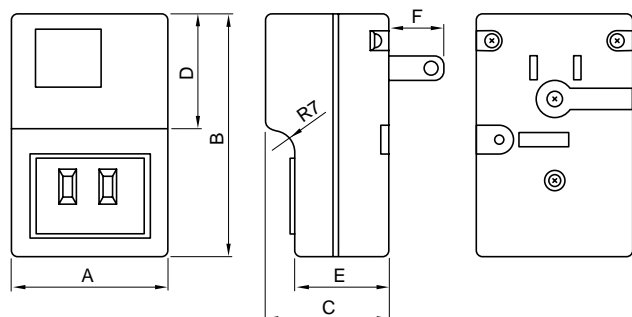
Part No.	Approved model No.	UL
ANF-106	▽41-20857	
ANF-106U		E62388

APPLICATIONS

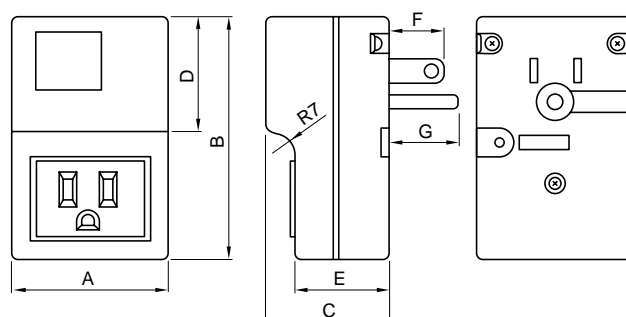
Information processing equipment, measurement control devices, office automation equipment, home information appliances, and devices containing thyristors, motors, and solenoids.

SHAPES AND DIMENSIONS

ANF-106



ANF-106U



Dimensions in mm

Part No.	A	B	C	D	E	F	G
ANF-106	48	75.5	38	36	29	17	–
ANF-106U	48	75.5	38	36	29	17	21

• Case: plastic

ELECTRICAL CHARACTERISTICS

Part No.	ANF-106	ANF-106U
Rated voltage Eac(V)	125	125
Rated current(A)	6	6
Test voltage Eac(V)[Between terminal No.1, 2 and ground terminal]	1500	1500
Insulation resistance(MΩ) [DC, 500V, 1min/between terminal No.1, 2 and ground terminal]	100min.	100min.
Leakage current(mA)[125V • 60Hz]	0.5max.	0.5max.
DC resistance(mΩ)	500max.	500max.
Operating temperature range(°C)[Including self-temperature rise]	0 to +40	0 to +40
Temperature rise(°C)	30max.	30max.
Attenuation frequency range (MHz)[+5 to +35°C]	Differential mode at 40dB Common-mode at 35dB	0.4 to 6 0.6 to 10
Weight(g)	160	160

EMC Components

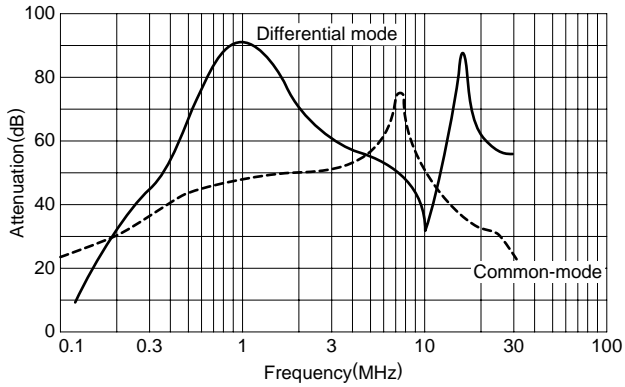
ANF, ANF-U Series

EMC Filters for AC Power Supply Adapter

TYPICAL ELECTRICAL CHARACTERISTICS

ATTENUATION vs. FREQUENCY CHARACTERISTICS

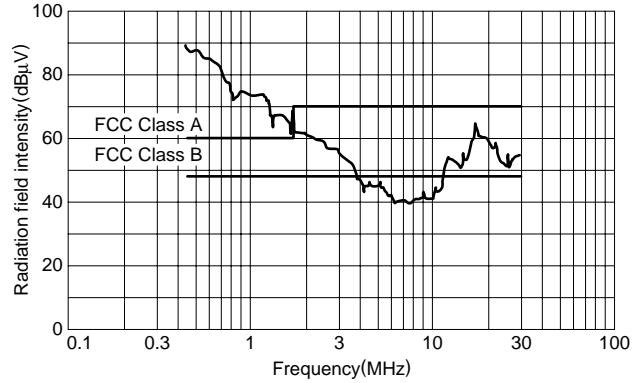
ANF-106/106U



EXAMPLES FOR EMC SUPPRESSION EFFECTS

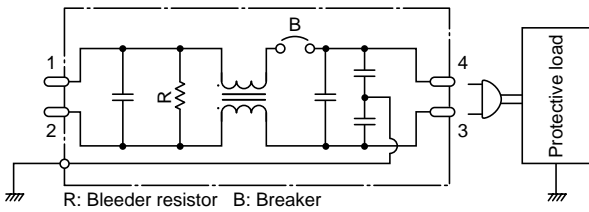
(Specimen: Personal computer)

WITHOUT EMC FILTER

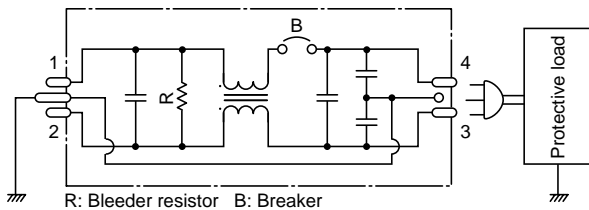


CIRCUIT DIAGRAMS

ANF-106



ANF-106U



WITH EMC FILTER(ANF-106U)

